



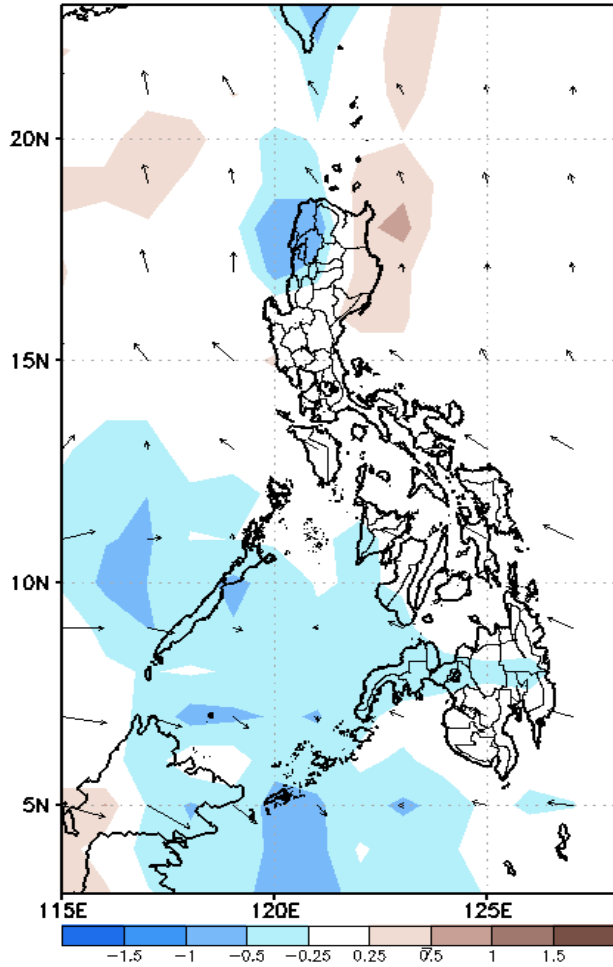
# Week 1 & Week 2 Forecast for the Philippines using GEFS Model



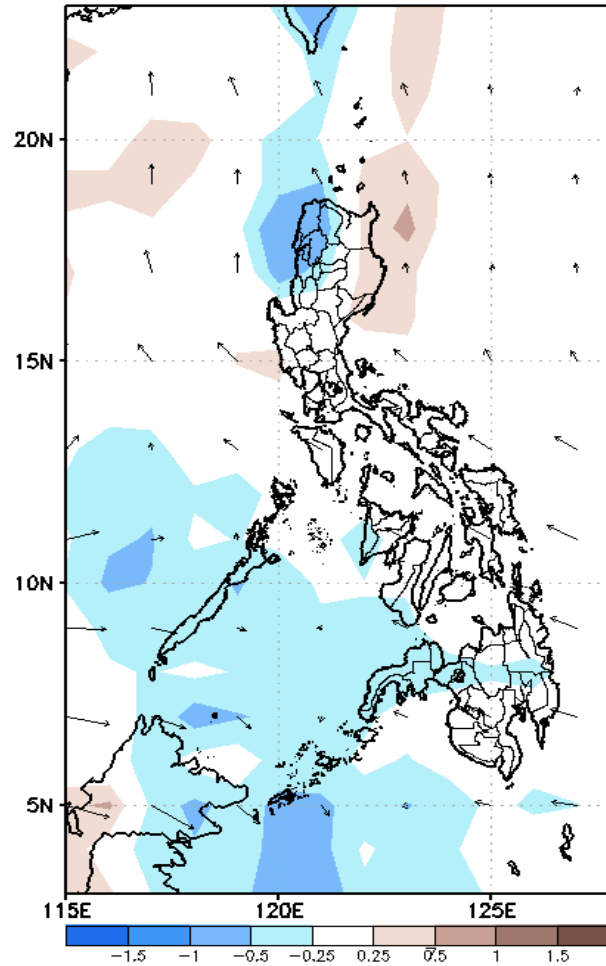
# GEFS Week-1 Forecasts: Divergence & Wind Anomaly

## Week 1: October 15-21, 2020

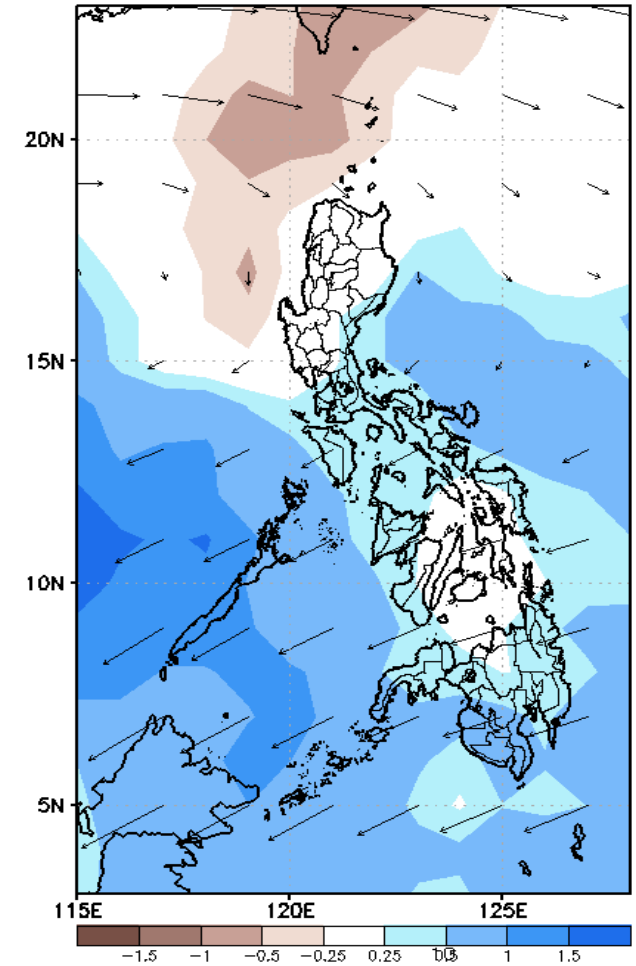
GEFS Week-1 850-hPa Divergence and Wind Anom  
Valid: 20201015 - 20201021



GEFS Week-1 700-hPa Divergence and Wind Anom  
Valid: 20201015 - 20201021



GEFS Week-1 200-hPa Divergence and Wind Anom  
Valid: 20201015 - 20201021

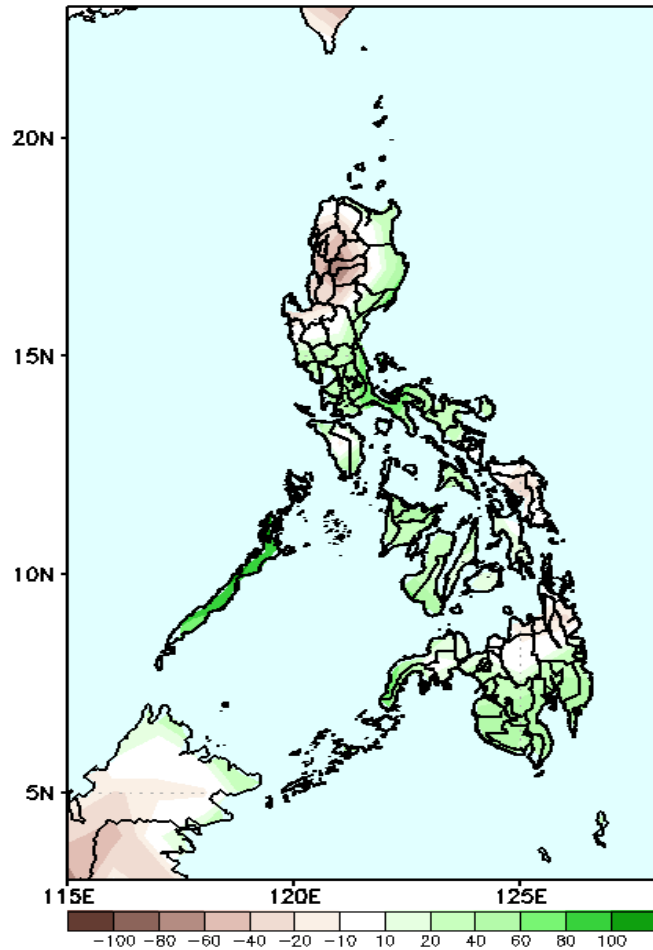


Upper level (200hPa) Divergence suggest likelihood of precipitation in Aurora, CALABARZON, NCR, parts of Visayas and most parts of Mindanao during the forecast period. Southwest monsoon affecting parts of Palawan and Zamboanga peninsula while easterlies affecting the remaining parts of the country

# Precipitation Anomaly and Exceedance Probability > 25/50 mm

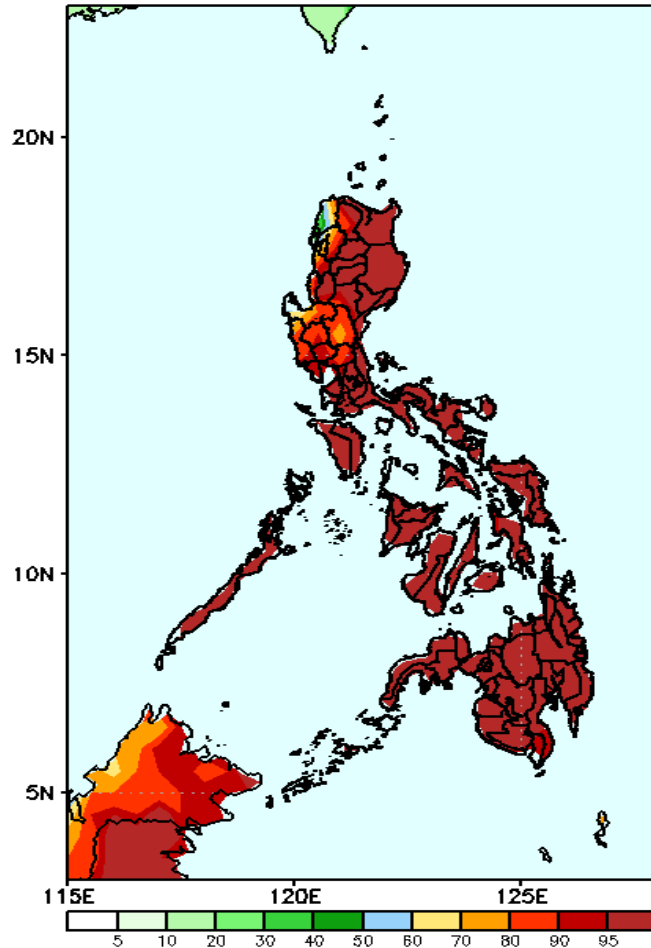
## Week 1: October 15-21, 2020

GEFS Week-1 Precip Anomaly  
Valid: 20201015 - 20201021



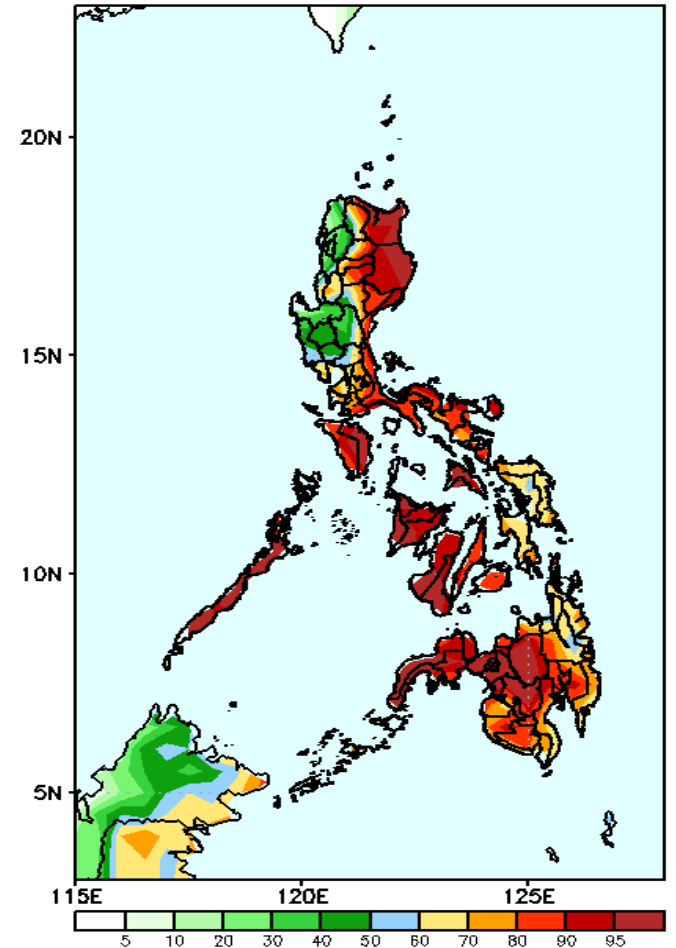
Increase of rainfall of 40-80mm is expected in eastern and southern parts of Luzon, in Visayas and southern half of Mindanao while rainfall deficit of up to 60mm in Cordillera Region during the forecast period.

GEFS Week-1 Exceedance Prob. > 25mm  
Valid: 20201015 - 20201021



High probability of rainfall to exceed 25mm in most parts the country is expected during the forecast period.

GEFS Week-1 Exceedance Prob. > 50mm  
Valid: 20201015 - 20201021

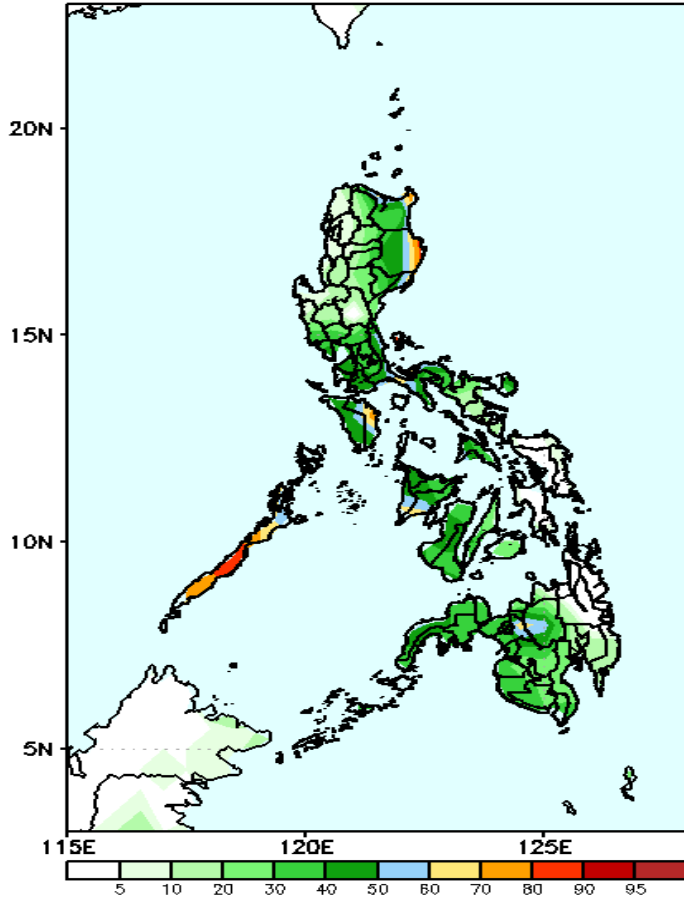


High probability of rainfall to exceed 50mm in most parts the country is expected except in the western parts of Luzon during the forecast period.

# Exceedance Probability > 100/150/200 mm

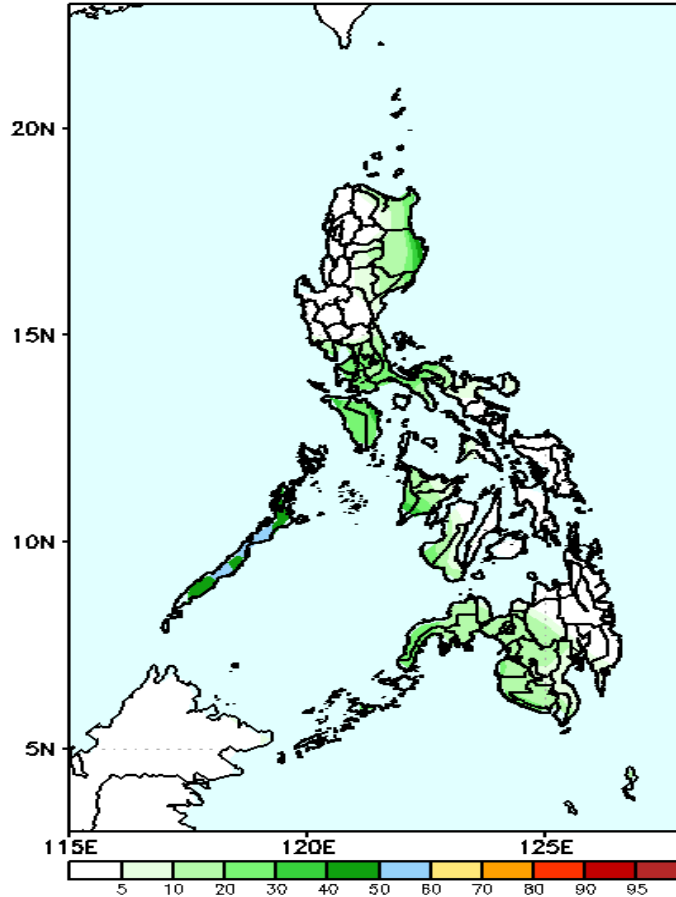
## Week 1: October 15-21, 2020

GEFS Week-1 Exceedance Prob. > 100mm  
Valid: 20201015 - 20201021



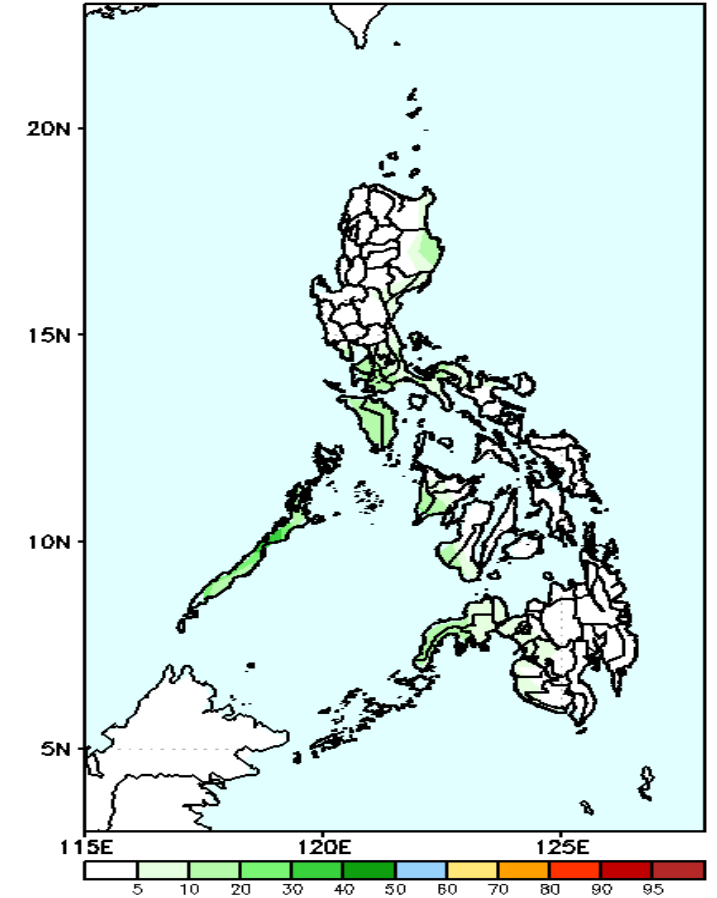
60-70% probability of rainfall to exceed 100mm in Palawan and eastern Isabela while less likely for the rest of the country during the forecast period.

GEFS Week-1 Exceedance Prob. > 150mm  
Valid: 20201015 - 20201021



Less probability of rainfall to exceed 150mm in most parts of the country during the forecast period.

GEFS Week-1 Exceedance Prob. > 200mm  
Valid: 20201015 - 20201021



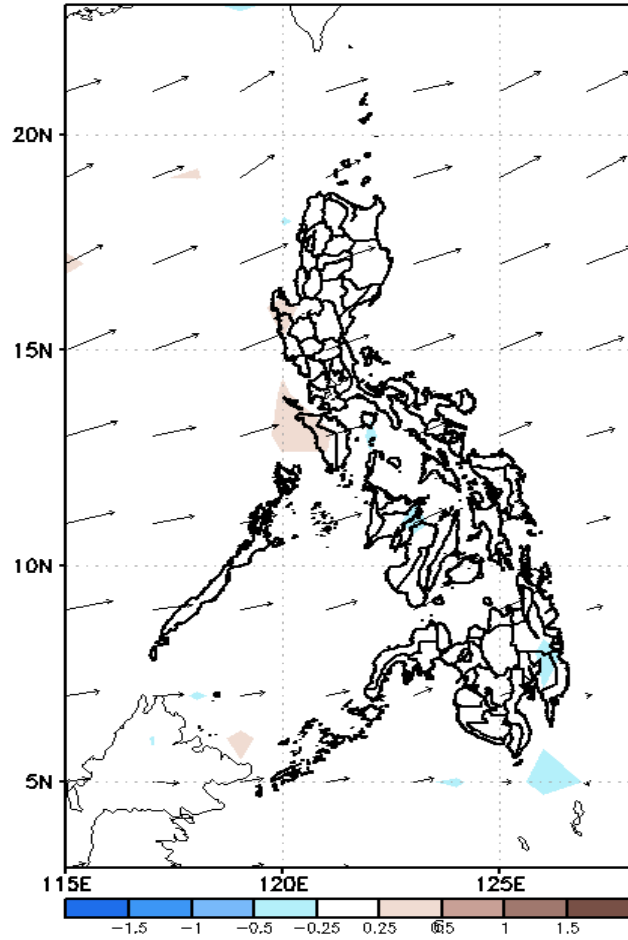
Less probability of rainfall to exceed 200mm in most parts of the country during the forecast period.



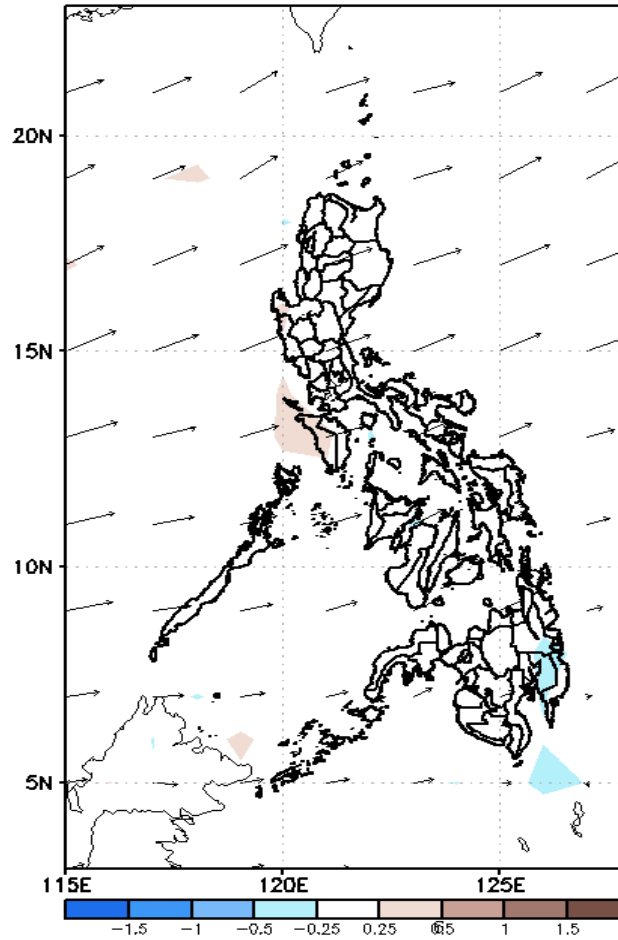
# GEFS Week-2 Forecasts: Divergence & Wind Anomaly

## Week 2: Oct 22-28, 2020

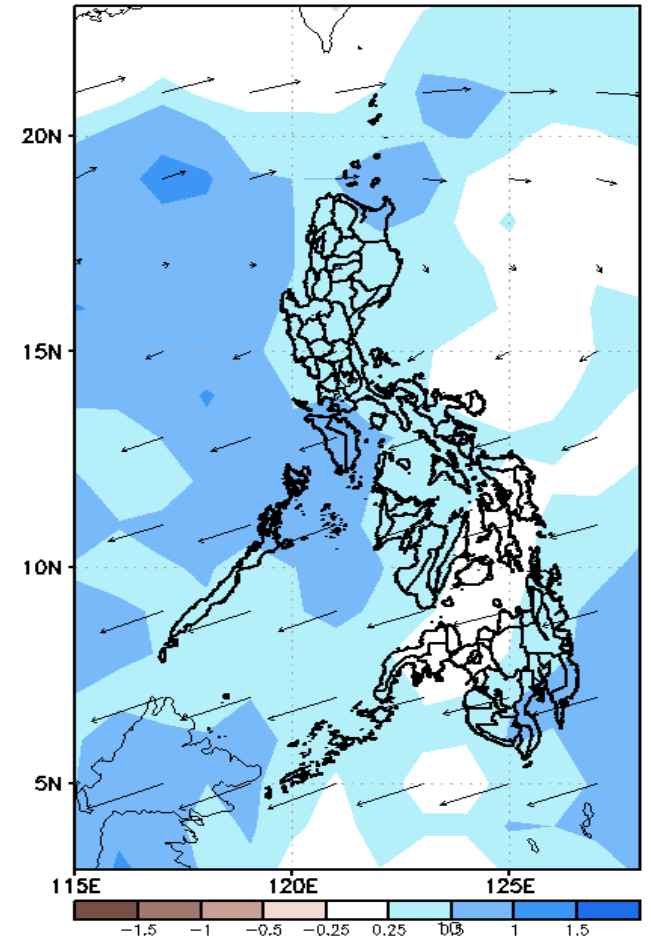
GEFS Week-2 850-hPa Divergence and Wind Anom  
Valid: 20201022 - 20201028



GEFS Week-2 700-hPa Divergence and Wind Anom  
Valid: 20201022 - 20201028



GEFS week-2 200-hPa Divergence and Wind Anom  
Valid: 20201022 - 20201028

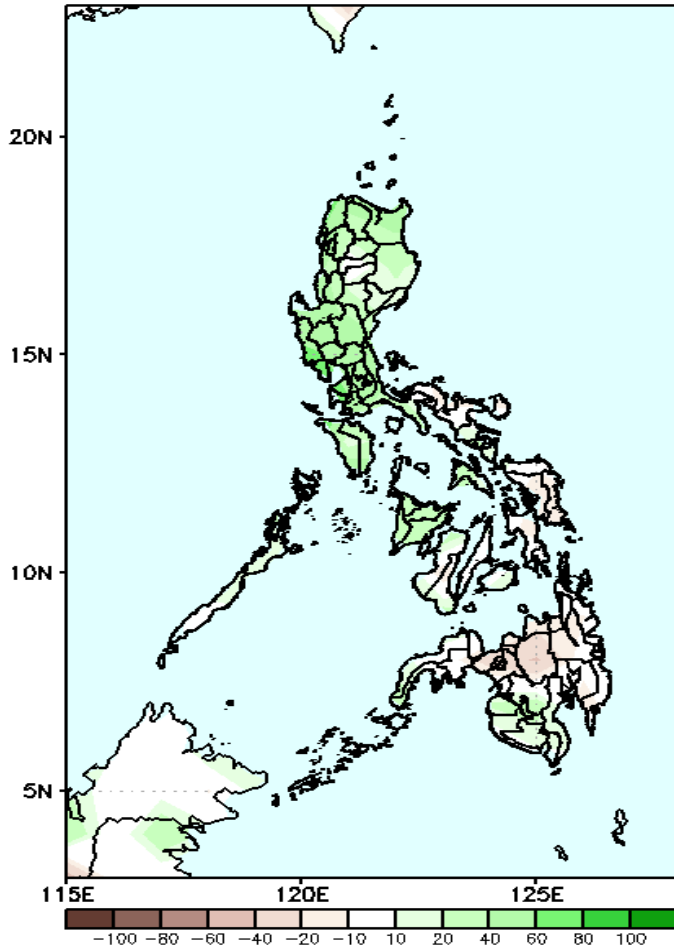


Upper level (200hPa) Divergence suggest likelihood of precipitation in most parts of the country during the forecast period. Southwest windflow affecting most parts of the country during the forecast period.

# Precipitation Anomaly and Exceedance Probability > 25/50 mm

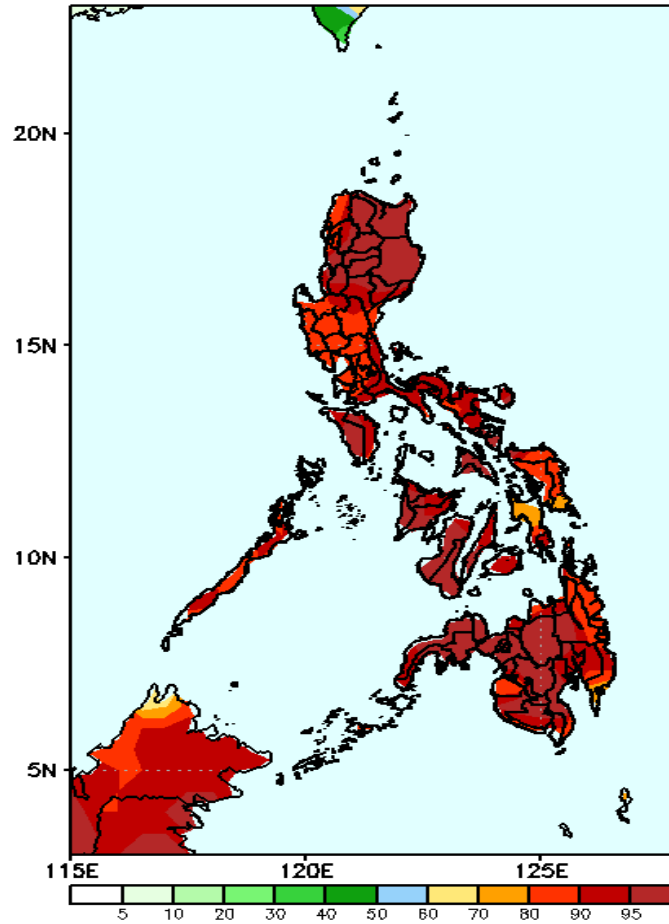
Week 2: Oct 22-28, 2020

GEFS Week-2 Precip Anomaly  
Valid: 20201022 - 20201028



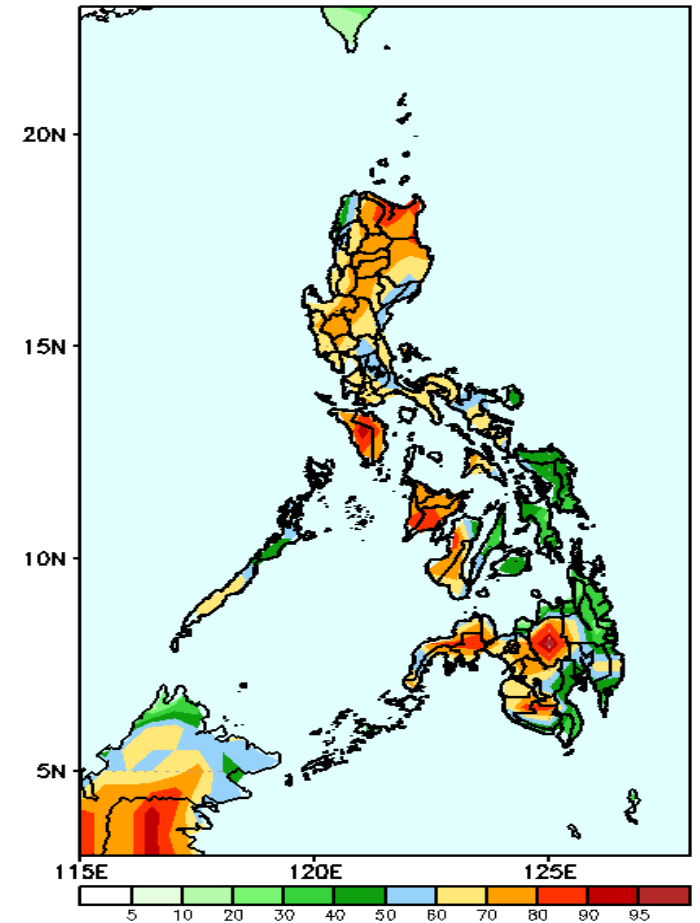
Increase of rainfall of 40-80mm in most parts of Luzon is expected during the forecast period.

GEFS Week-2 Exceedance Prob. > 25mm  
Valid: 20201022 - 20201028



High probability of rainfall to exceed 25mm in most parts the country is expected during the forecast period.

GEFS Week-2 Exceedance Prob. > 50mm  
Valid: 20201022 - 20201028



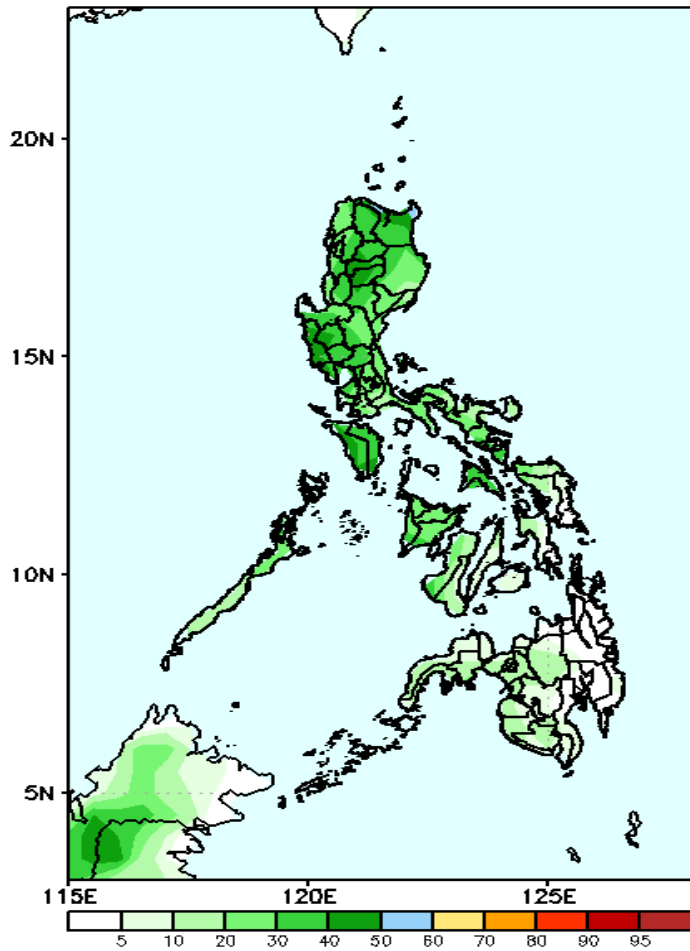
High probability of rainfall to exceed 50mm in most parts of Luzon, western Visayas and in Bukidnon and western Mindanao while less likely for the rest of the country during the forecast period.



# Exceedance Probability > 100/150/200 mm

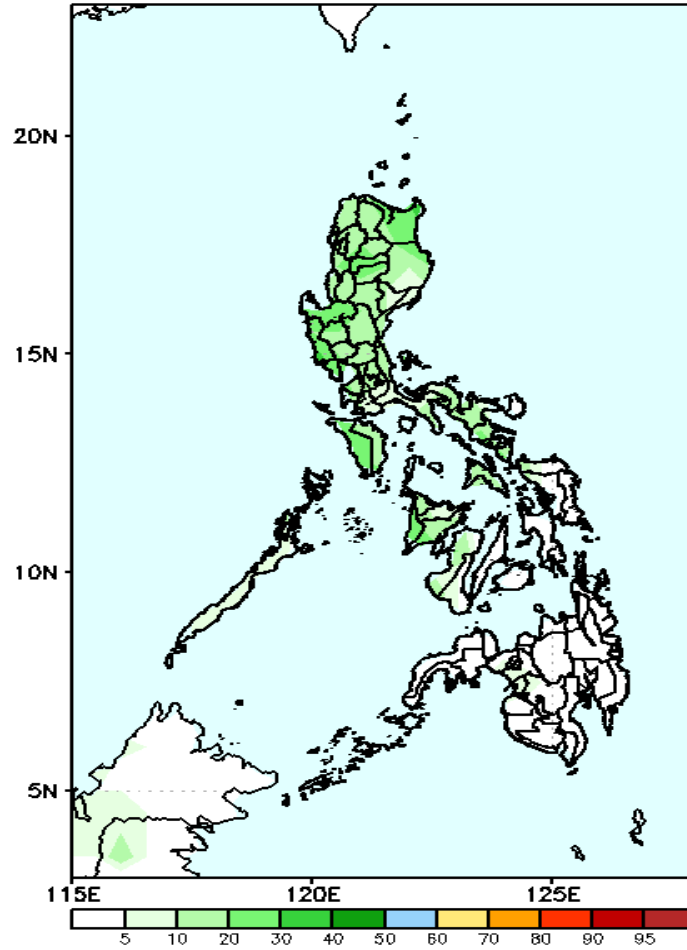
## Week 2: Oct 22-28, 2020

GEFS Week-2 Exceedance Prob. > 100mm  
Valid: 20201022 - 20201028



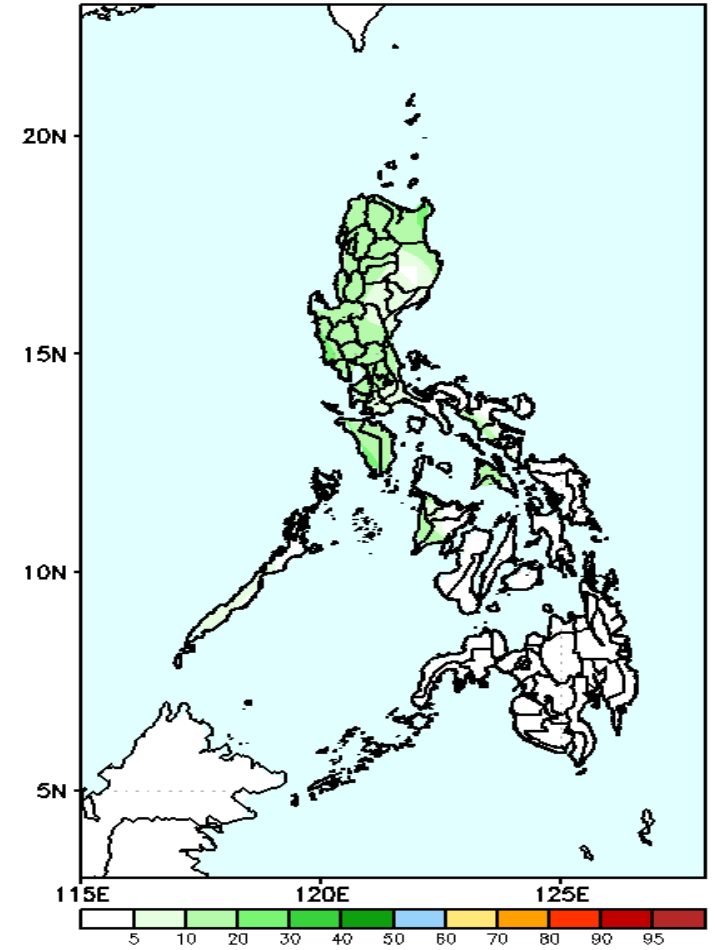
Less probability of rainfall to exceed 100mm in most parts of the country during the forecast period.

GEFS Week-2 Exceedance Prob. > 150mm  
Valid: 20201022 - 20201028



Less probability of rainfall to exceed 150mm in most parts of the country is expected during the forecast period.

GEFS Week-2 Exceedance Prob. > 200mm  
Valid: 20201022 - 20201028

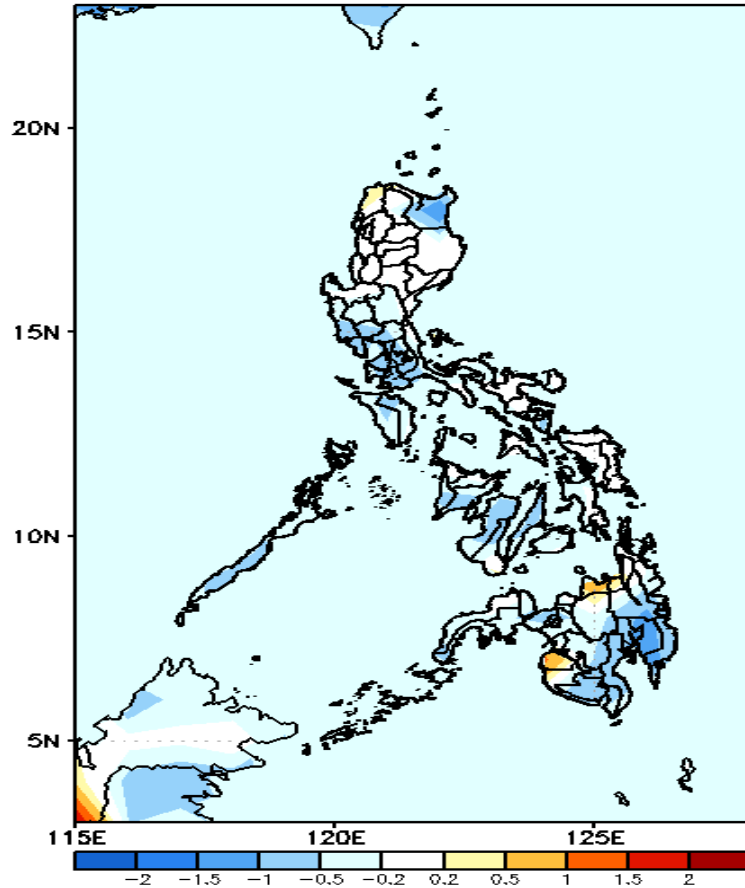


Less probability of rainfall to exceed 200mm in most parts of the country is expected during the forecast period.



# GEFS Week-1 & 2 Forecasts: T2m Anomaly

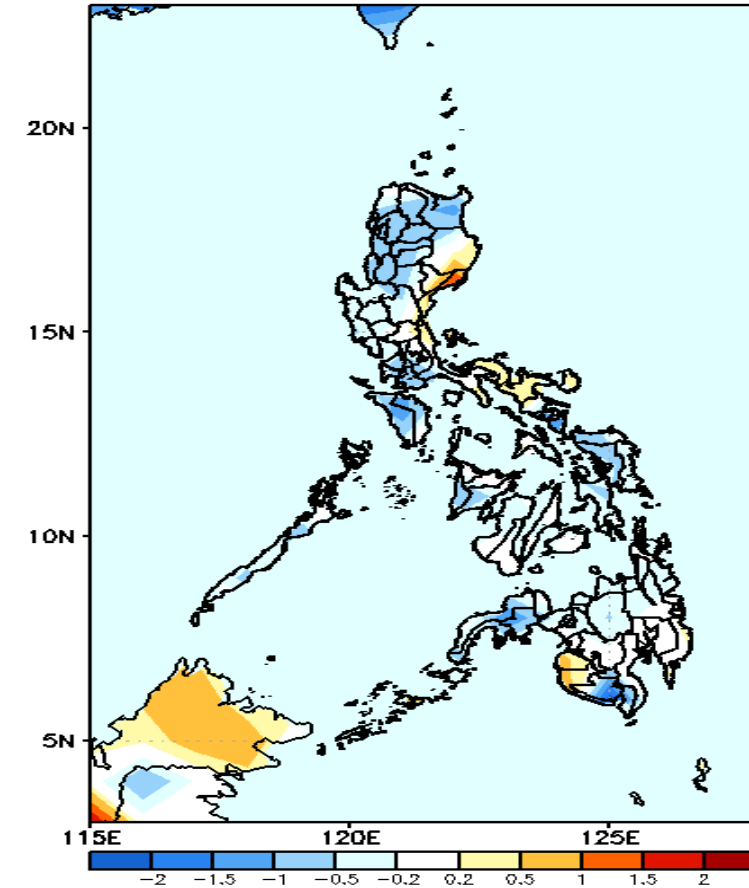
GEFS Week-1 T2m Anomaly  
Valid: 20201015 - 20201021



## 2m Temperature Week 1: October 15-21, 2020

Slightly cooler to cooler than average surface air temperature is expected in Cagayan, Mindoro, southern Luzon, western Visayas, and southern half of Mindanao while average temperature for the rest of the country during the forecast period.

GEFS Week-2 T2m Anomaly  
Valid: 20201022 - 20201028



## 2m Temperature Week 2: Oct 22-28, 2020

Slightly cooler to cooler than average surface air temperature will likely experience in most parts of Luzon and Visayas, while average to slightly warmer temperature is more likely in Isabela, Bicol Region and Mindanao during the forecast period.

